

Illustration

Kinsco Veszi 2021

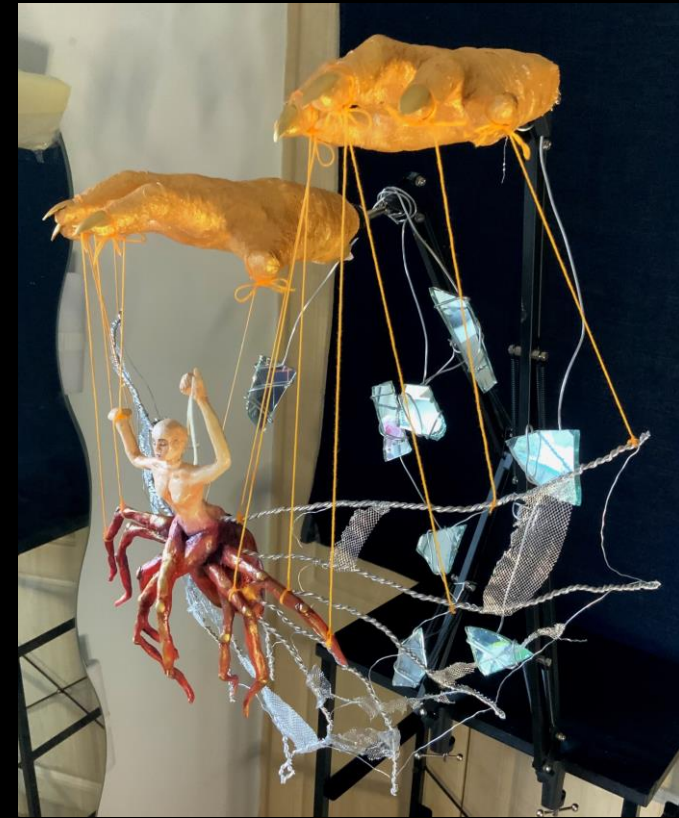
Angel Lino Set

Influenced by Angel Gravestones and the Maleficent movie.



Arachne Kinetic Sculpture

- Approx. 70 x 55 cm
- Wire, clay, plaster, nail glue, fake nails, gold thread, broken mirror shards, acrylic paint, gesso etc.
- You can find a 360 video on the following link:
<https://www.youtube.com/watch?v=fzbucA7n3gA>



Arachne Sculpture Process



1. Figured out structure of main body with wire and tape.



2. Redid larger with better materials and fixed problems.



3. Broke mirrors with hammer safely.



4. Finished structure and decided on hand positions.



5. Put hands in specific positions.



6. My sister helped plaster my hands.



7. Stuck sharpened fake nails on the hands and painted it gold.



8. Mounted the hands onto a stand & attached the structure to the hands using gold string.



9. Using air drying clay sculpted the body of Arachne.



10. Painted Arachne, attached rest of strings, attached mirror to mount with wire & made finishing touches.

Arachne Mini Model Process Sheet

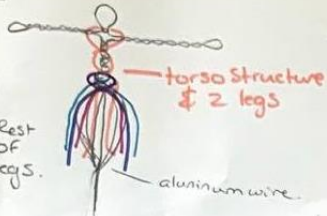
Sculpture Brief
Structure development

Wire Structure

Step 1

Step 2

Step 3
Step 4
Step 5



Step 6

Fill with
Masking/tape
Poke holes
here

Step 7
thread wire through
holes & wrap 1 around
torso leaving a length
this last wire should
be double wrapped with another to
provide extra strength in order to
hold up the sculpture.

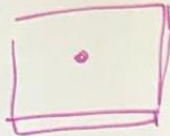
thick gauged
wire.



Step 8
Using a thinner
wire connect
protruding wires
in a web-like
shape



Step 9



drill hole through a
wooden base.

Step 10



thread these two
wires through the
hole & secure
with hot glue gun.
Cut off excess.

Step 11

sand down the bottom until
it is perfectly smooth.



cover bottom where the
wire connects with the wood
panel with air drying clay
when satisfied leave to dry.

Materials used

- Aluminum & wire
- Air drying Clay (Circled)
- Masking & normal tape as a filler
- thread, tube & other bits & bobs as decoration.

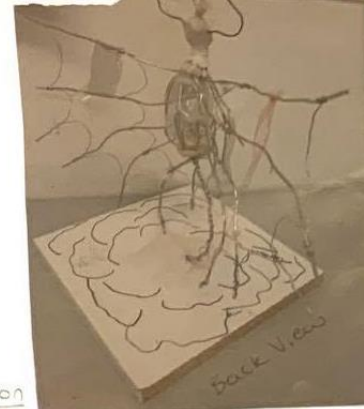
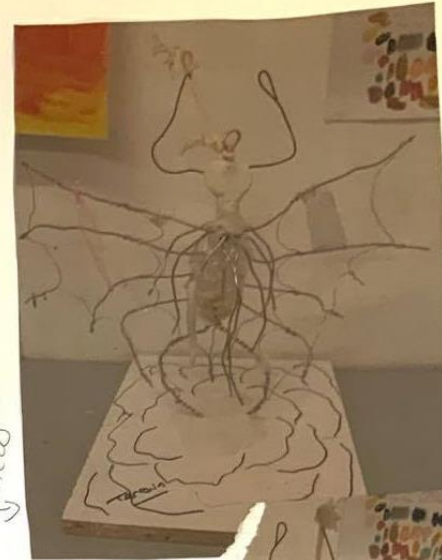
Mistake

Originally tried to make
the structure with only one
wire. This was too weak &
the wire could not hold up the
sculpture

Solution

Fixed this to create
a stronger structure by
wrapping two wires together
& using that instead

Front
View



Concept Development & Research sheet

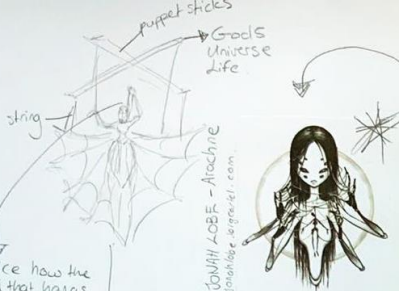
Arachne was a weaver who challenged the gods and was shamed for it. This ruined her life and caused her to try end it, but the Gods cursed her to weave for all eternity by turning her into a spider.

Concept Research



- Simon Lee
"Arachnid"
(2012)

Anatomy
Reference.



Notice how the hand that hangs her is not controlled by the Gods. It's her choice.

Upon further Research I found this gorgeous piece which inspired me tremendously.

"puppet"

Are you trapped in life's web?
Are you a victim of your life/universe/
Whatever God you believe in?

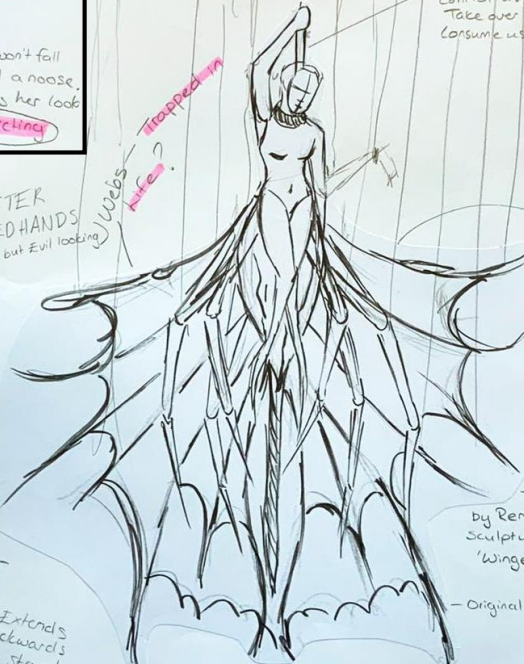
the strings keep her alive, she won't fall enough to die, but yet there is still a noose. The trapped web also makes her look like she has wings. **Contradicting imagery.**

LOVE
THIS



PLASTER
MOLDED HANDS
(Gold but Evil looking)

Webbs - trapped in life?



Events BEYOND OUR CONTROL

Will we let these Control us?
Take over us?
Consume us?



Creating the ground-work for the sculpture out of wire & masking-tape.

Experimenting with future ideas of using Broken Shards of Mirror around the Sculpture

→ 1st sketch inspired by René Jules Zolaque's Sculpture → "Winged woman Baustade"

→ Original found in sketchbook

My self-reflection.

BROKEN mirror shards → I feel broken a lot especially lately. I've gone through so many things that I could not control as we all have this year with COVID-19 but I will not let these events consume me. I will **weave my own life** my own story.

Artist Inspirations on Concept



Questions that the piece might ask as a reflection

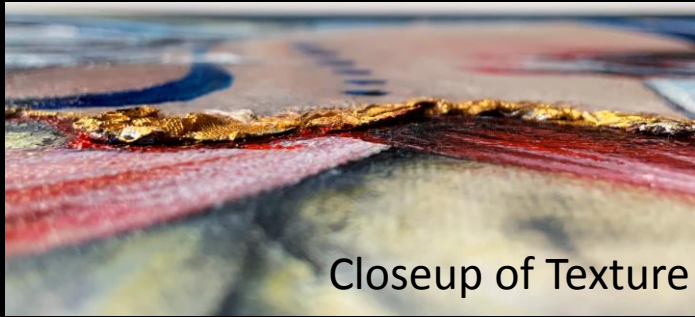
How do you view death?
Questioning Faith?
Were the Gods merciful or Cruel?
The Flaw of Arrogance?
Do you feel trapped?

Could signify Arachne's shattered life while also allowing the viewer to reflect upon the piece & what the sculpture means to him/her?

It was quite therapeutic smashing the mirror. Afterward I stuck rose gold to the test bags to crush outside to prevent flying shards.



Tunde Kinsco Veszi Art Portfolio.



Closeup of Texture



'Hel' Acrylic on Canvas, 70 x 45.5 cm

- This is a very interpretational piece that can signify a lot of the things many women go through, while radiating the strength we all hold.
- Her piercing unaffected gaze shows her strength even through the pain of the hooks in her skin.
- I can see my abuse and my strength in this piece. Staring down the pain & pushing through it to come out on top at the end, victorious, & demanding of respect.

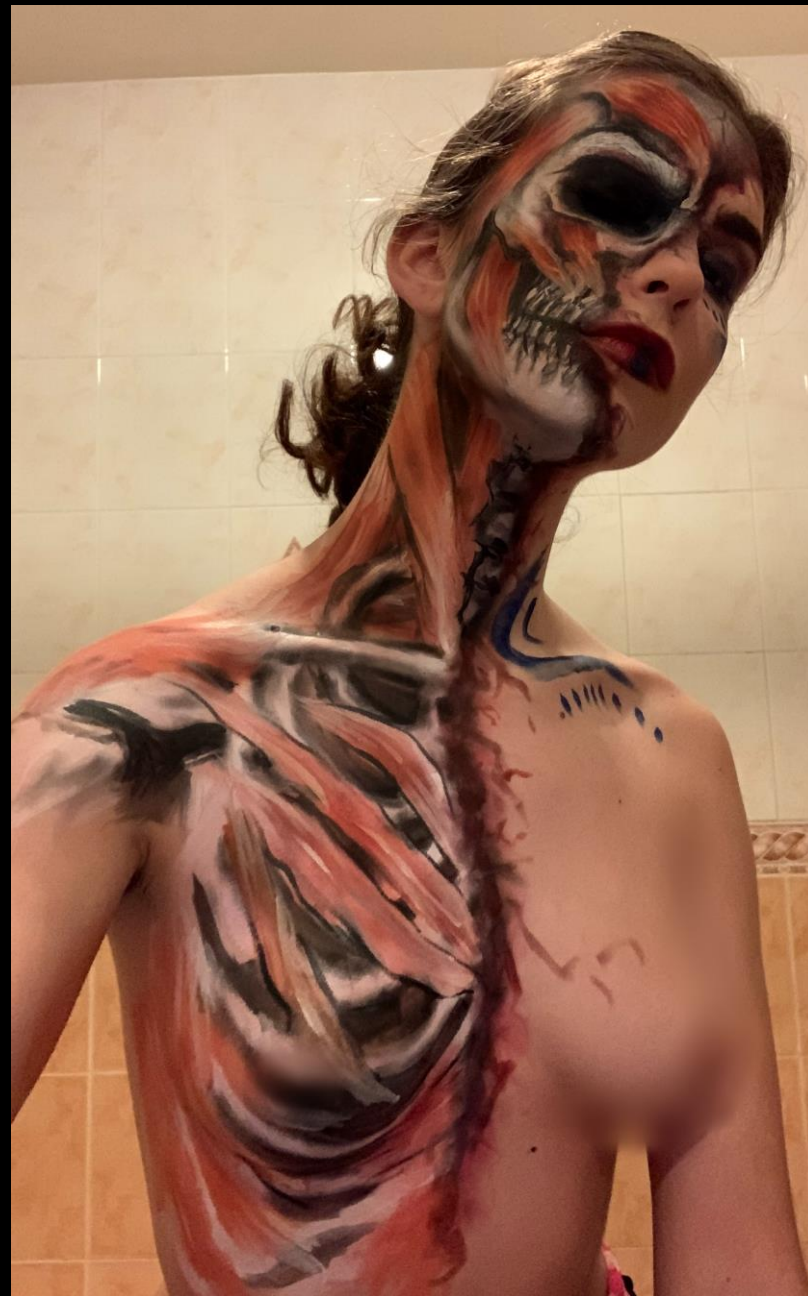


Size Reference



Hel Makeup, Face & Body Paint

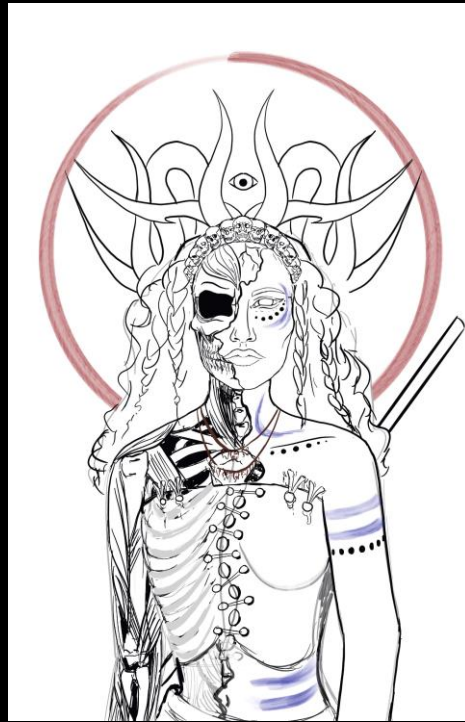
Used this to understand the anatomy
and also to use as reference photos.



Hel Painting Process



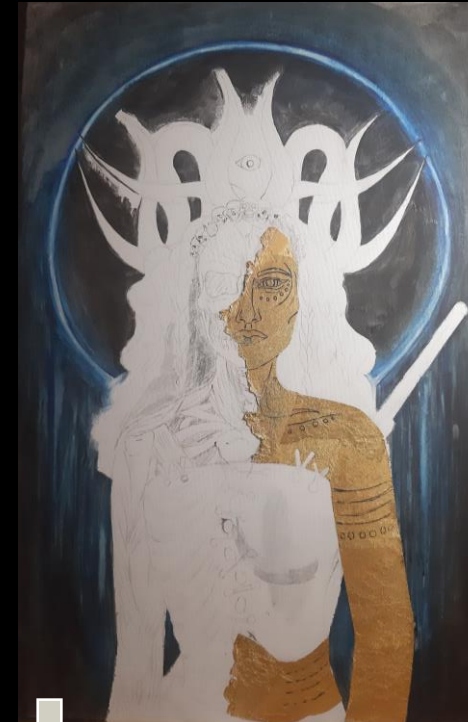
Sketch



Digitalized Sketch



Digital Colour Composition



Prime Canvas with Gesso & Gold Wrappers



Paint Crown & Skin. 2 contrasting light sources.



Painted Muscles & bones



Her chest plate connects her two "sides" signifying how our darker & broken sides are still part of us.

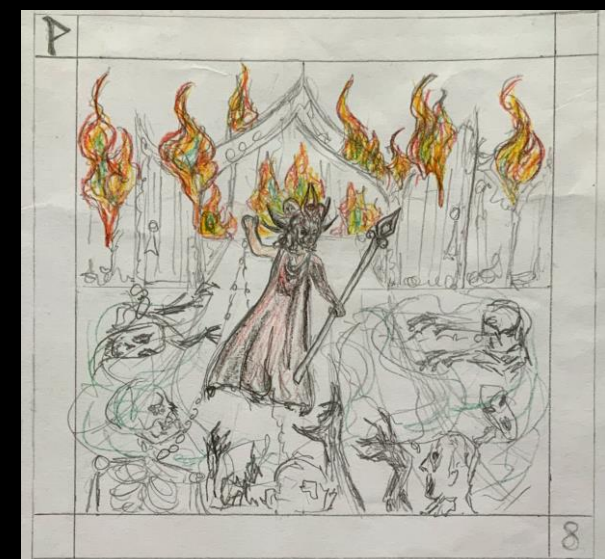
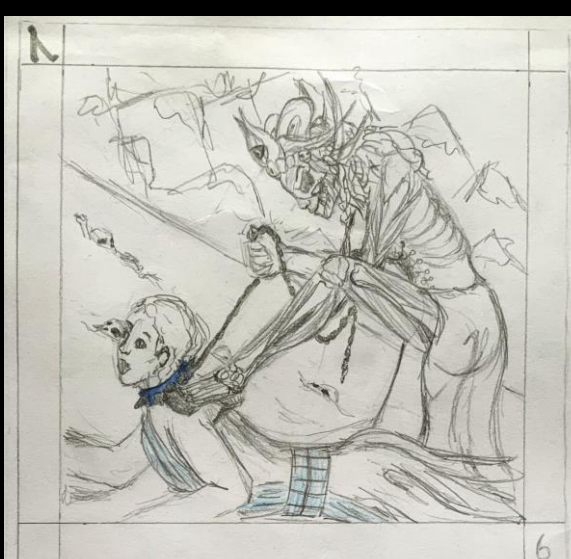
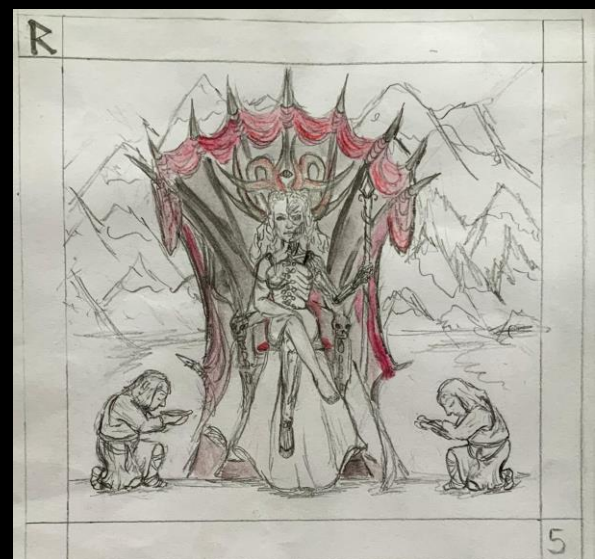
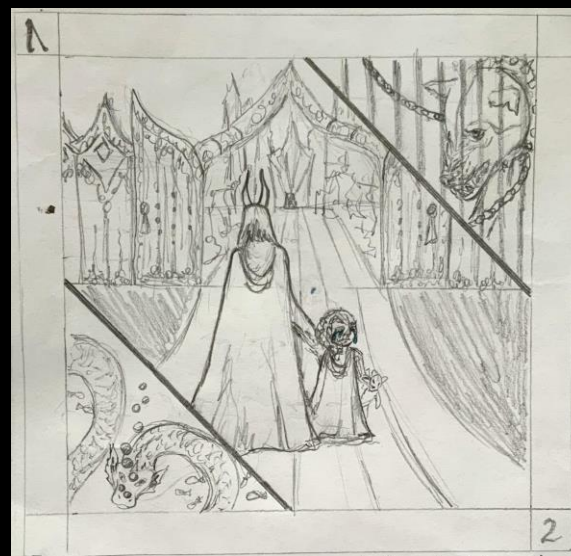
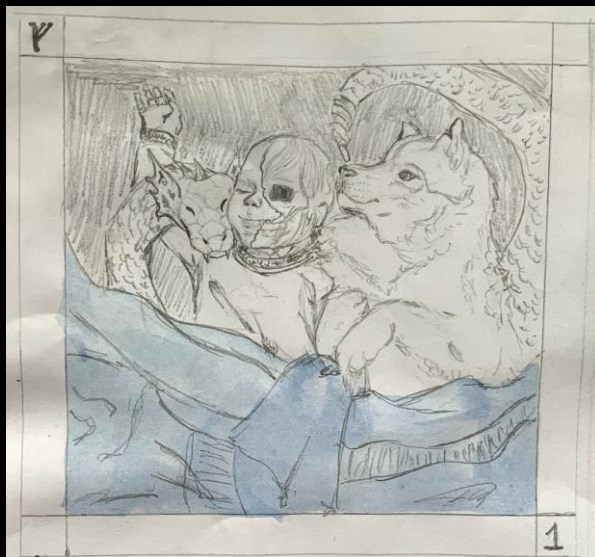
Painted white hair with purple undertone.



Her "pretty" side is painted on gold Ferrero Roche wrappers, signifying the false value our society puts on beauty and paying tribute to the abuse Hel and many others went through because of this.

Storyboard about 'Hel' the Norse Goddess of Death

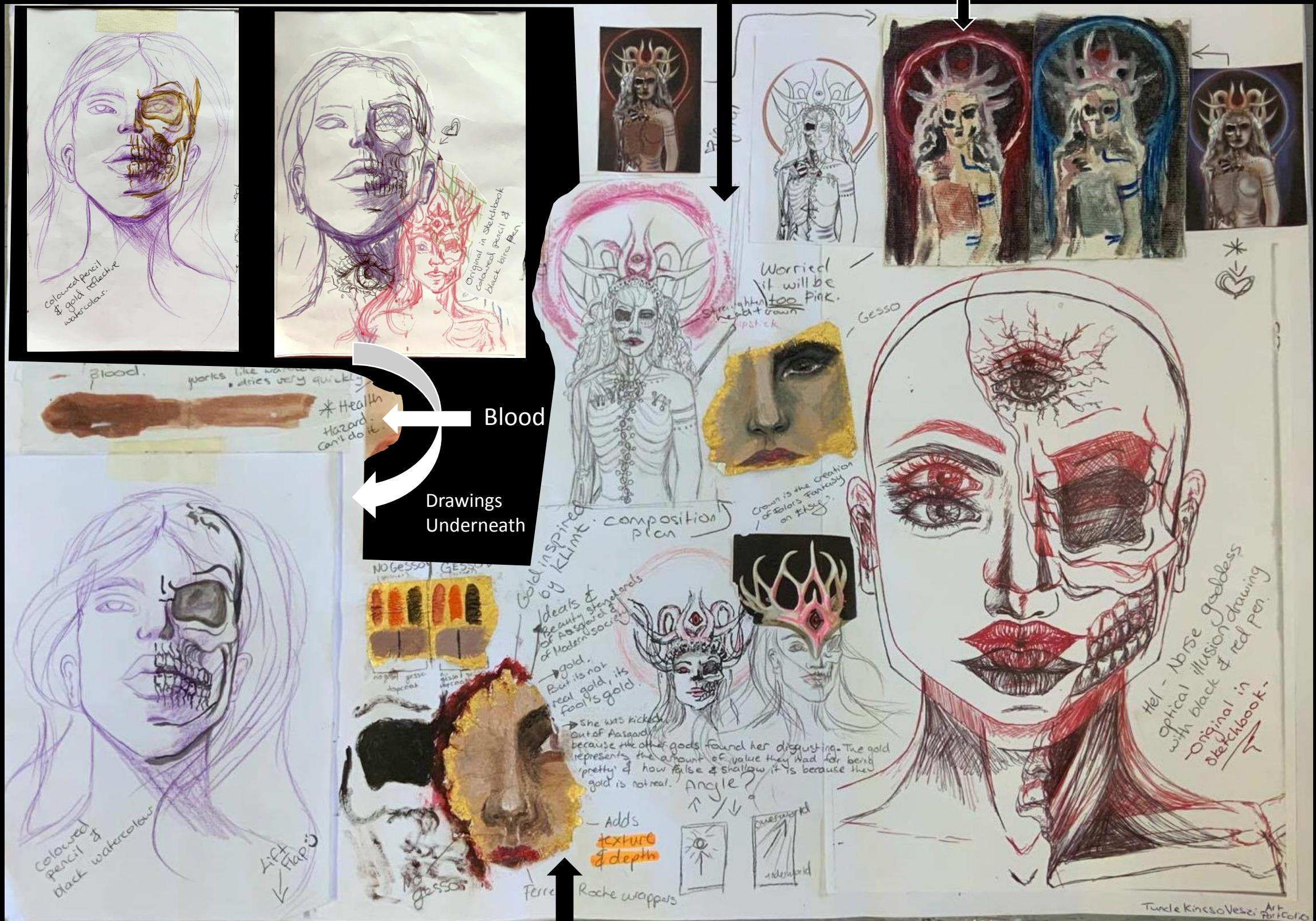
- The storyboard could be turned into an animation in the future, but for the purpose of this project I used it to understand the key moments of her story. For each board I highlighted one specific section of the scene in colour to convey a deeper message.
- Hel was born with half of the bones on her body exposed. She was taken away from her mother & her siblings, who were both locked up. She was brought to Asgard, where she was bullied for her appearance & then banished to Nilfheim, a cruel land of the dead. She refused to show mercy on Odin's son when he fell into her domain and in return her siblings were murdered. She then destroyed Asgard with an army of the dead.



Experimentation & Concept Sheet for 'Hel'

Composition Plan

Colour experiments on Canvas



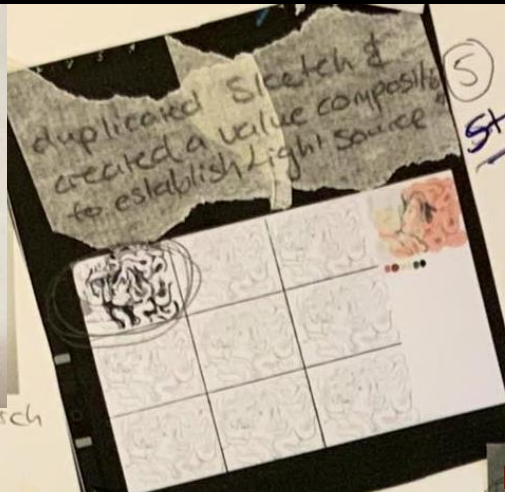
Painting Experiments on Ferrero Rocher Wrappers

"The Curse of Medusa", Acrylic on Paper, A3





① Original Sketch done on Research Sheet



Played around with colour composition to create colour palette



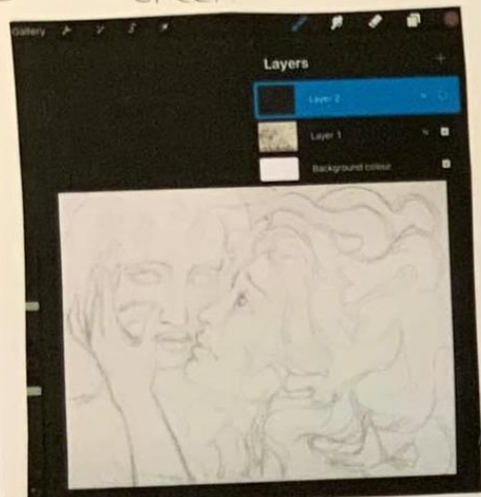
⑤ Storyboard

Chosen colour palettes (basic)

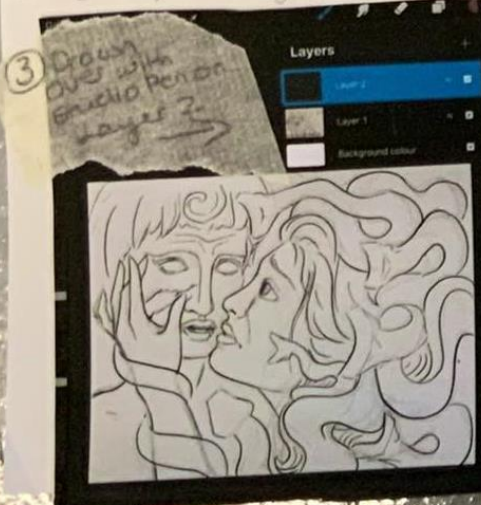


-medusa + snake

-perseus (stone)



② Sketch thrown into Procreate (Photo) as layer 1



③ Draw over with brush to Perseus layer 2



④ To create digital version of sketch



Laid down sketch onto A3 paper & blocked out basic colour values.



⑨

Started with Medusa's Face & Hair making sure to constantly Reference Robert Henri's style & resist the urge to blend haha. Over time the build up of colour naturally blended together while still being able to make out the brush strokes. Also used green in the shadows.

Style and Story night

Then worked on perseus & really enjoyed the limited colour palette he had. He looks cold as stone. Frozen in his shocked expression. His brushstrokes are extremely visible to reference Robert Henri, The Swill in his hair is to pay tribute to the movement Van Gogh had in his art (the other artist I looked at but didn't end up choosing).

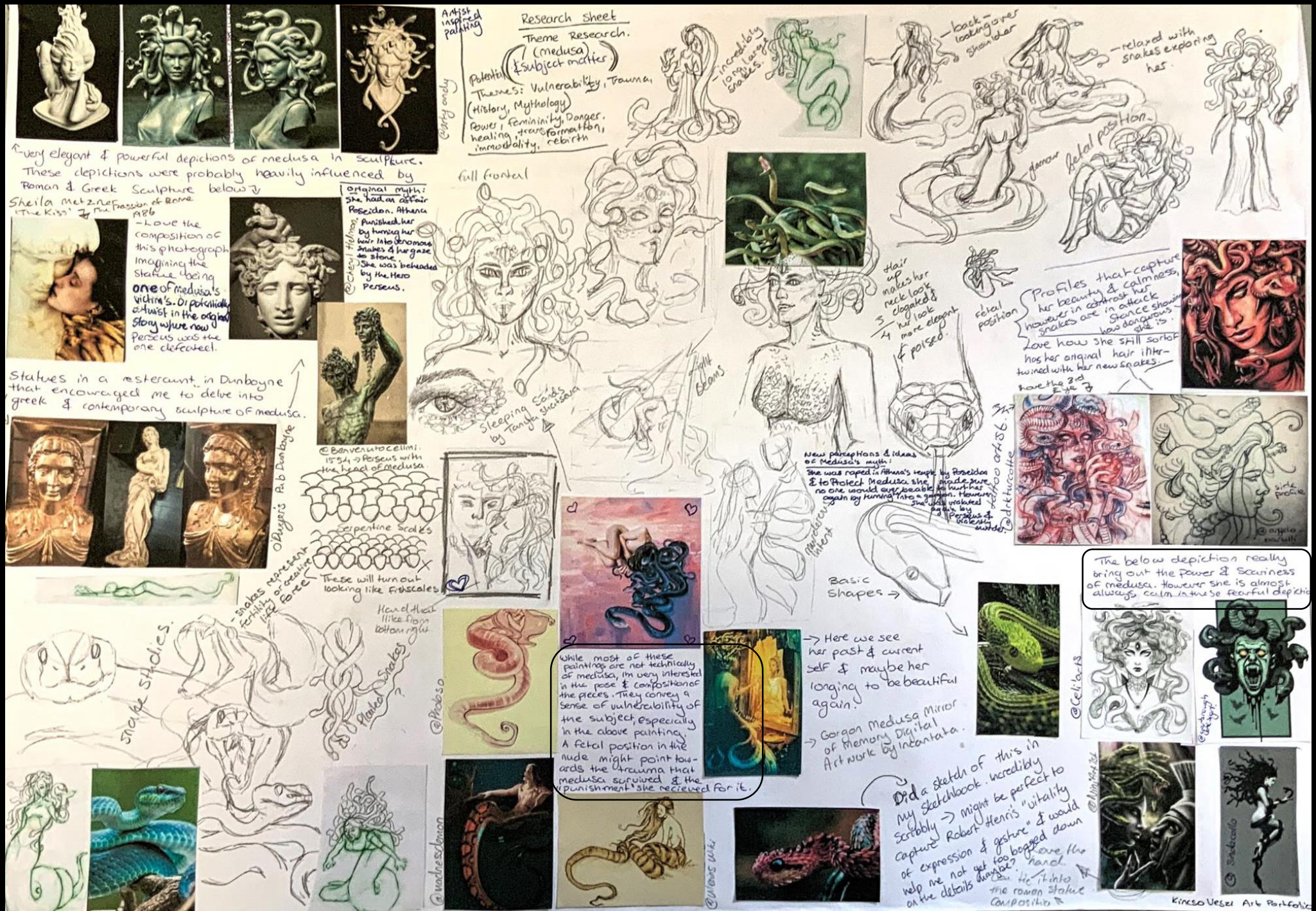
⑪



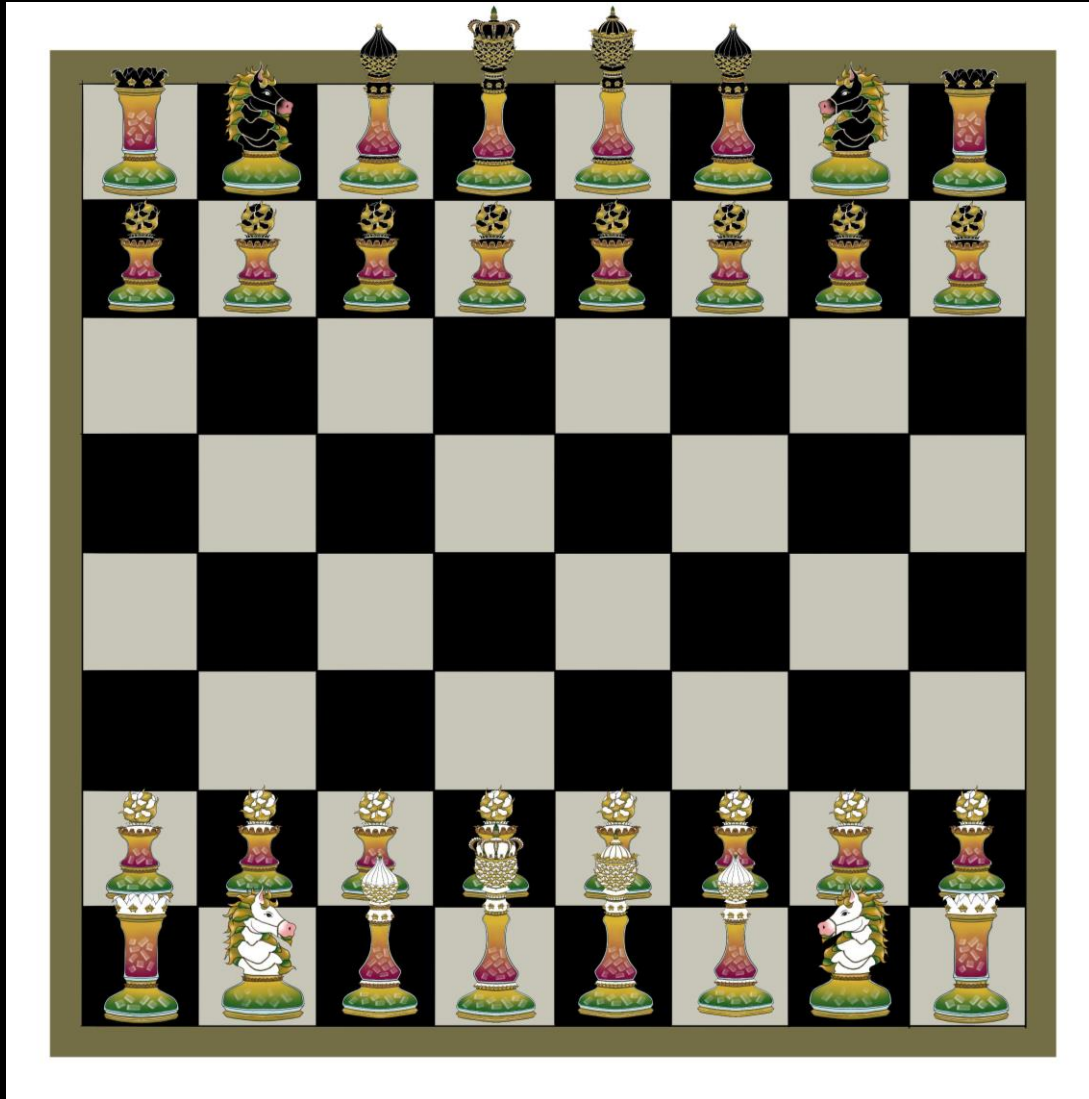
Here we move onto the snakes in which I use a messy style to slowly build up the depth of the scales. This is a timely process & I also pay's homage to Van Gogh as they portray movement while also taking on the



Medusa Concept & Subject Matter Research



I looked at multiple depictions of Medusa in history and modern times. I wanted to capture the immense power she holds but also show the effect of her curse, her loneliness and vulnerability. I wanted to depict these two contrasting ideas in one image.



Preview of Chess Pieces on a Chess Board



Knight



Rook



Pawn



King



Queen



Bishop

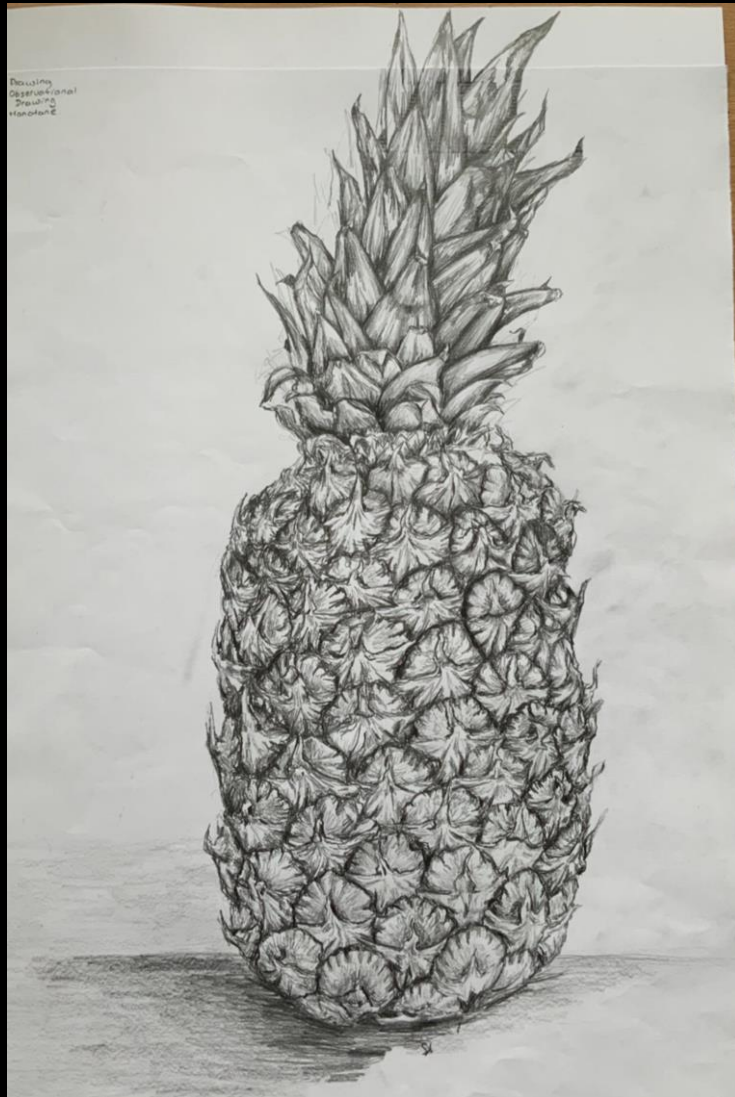
Finished Designs done digitally
on Procreate.



Mixing two ordinary objects together (Chess and Pineapples) I generated some ideas from my observational drawings of a pineapple, pineapple cocktails & Staunton Chess Pieces. Figuring out how to make Form & Function work together.



Observational Drawing



Monotone Pencil Drawing



Watercolour Study



Mixed Media

Using Pistachio Shells, Tissue paper,
Magazine cut-outs and packing paper.



Close-up of Texture

Process



Dragon Head Sculpture

Clay, Acrylic Paint &
Varnish



Links to Videos

[One](#)

[Two](#)

[Three](#)