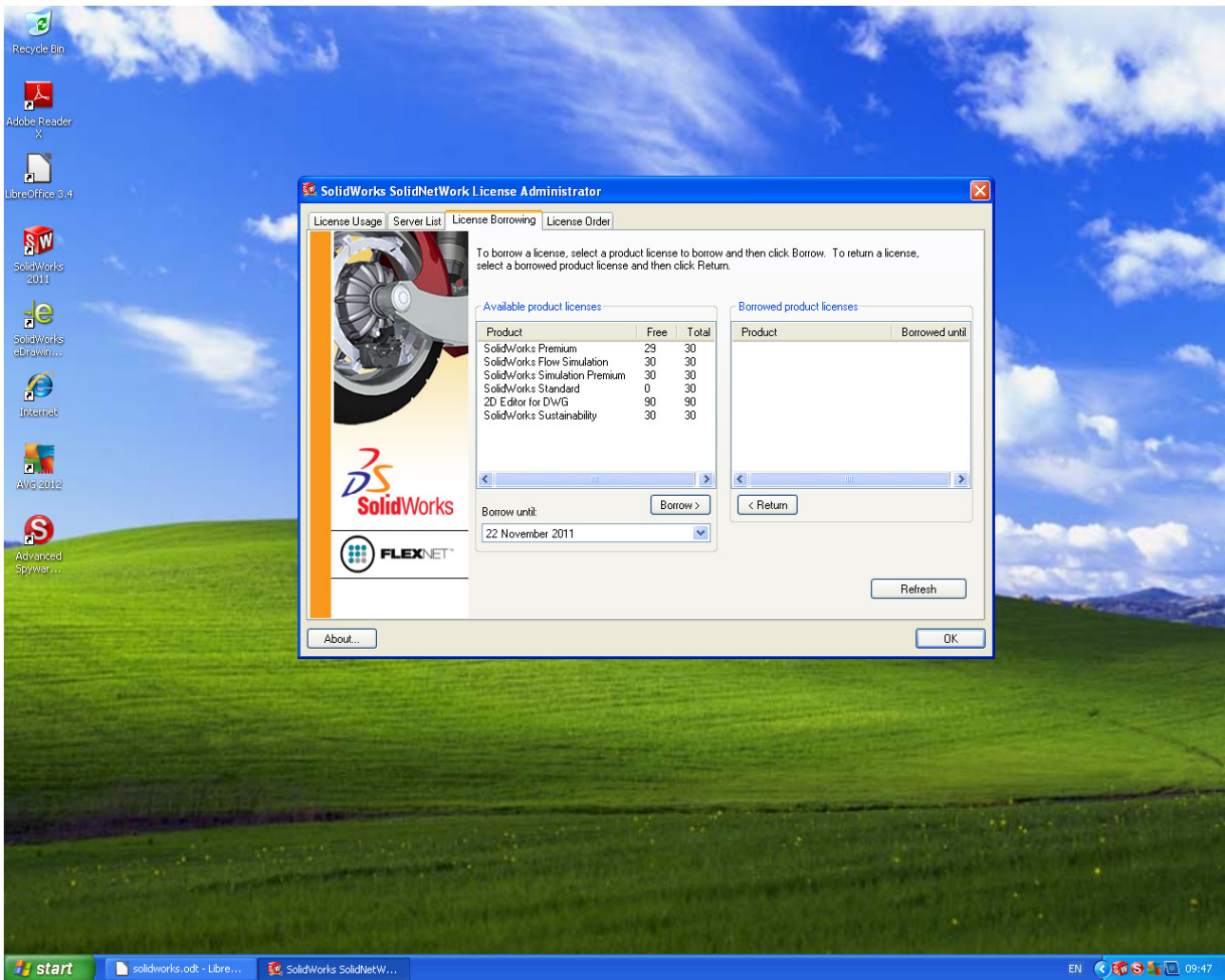
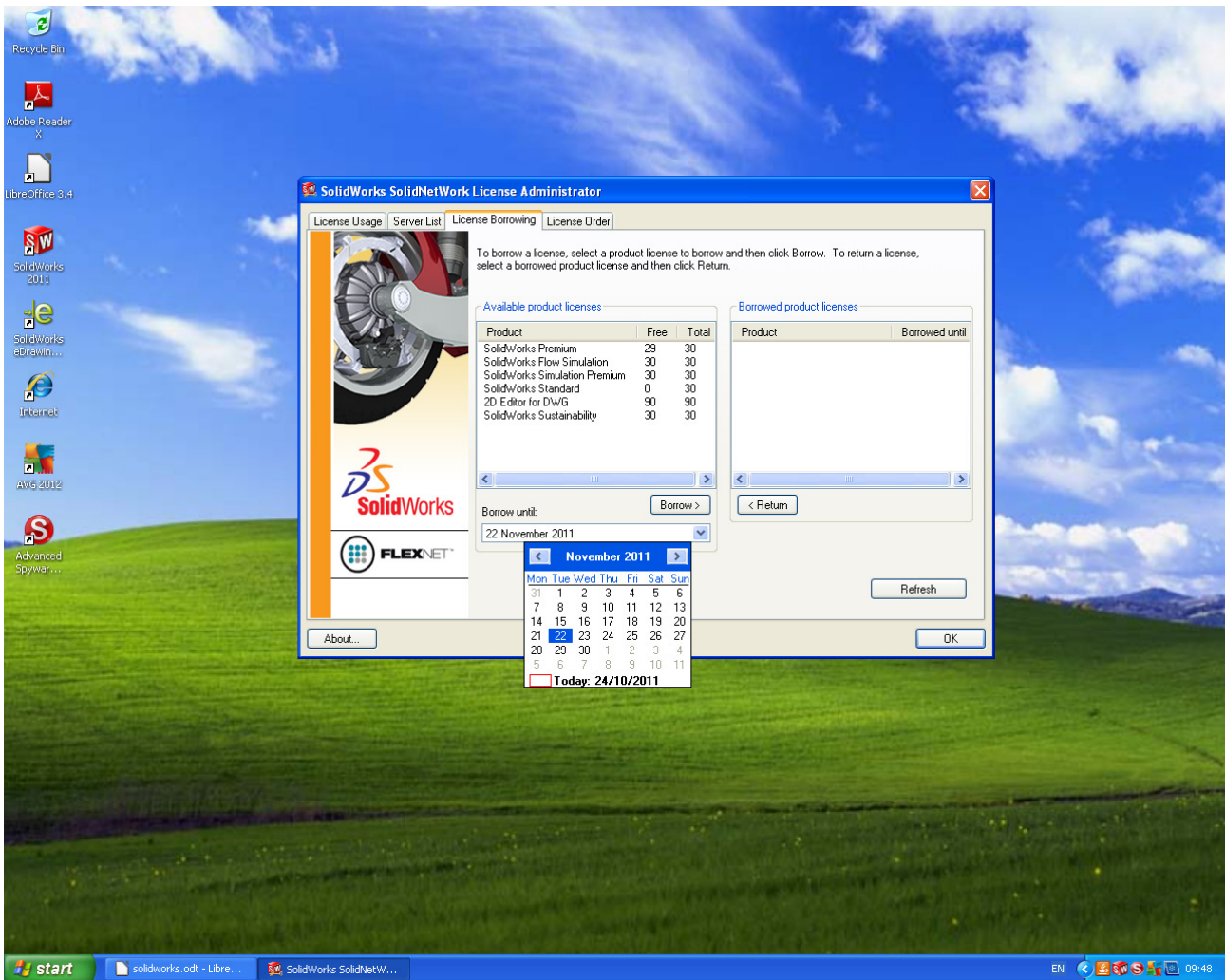




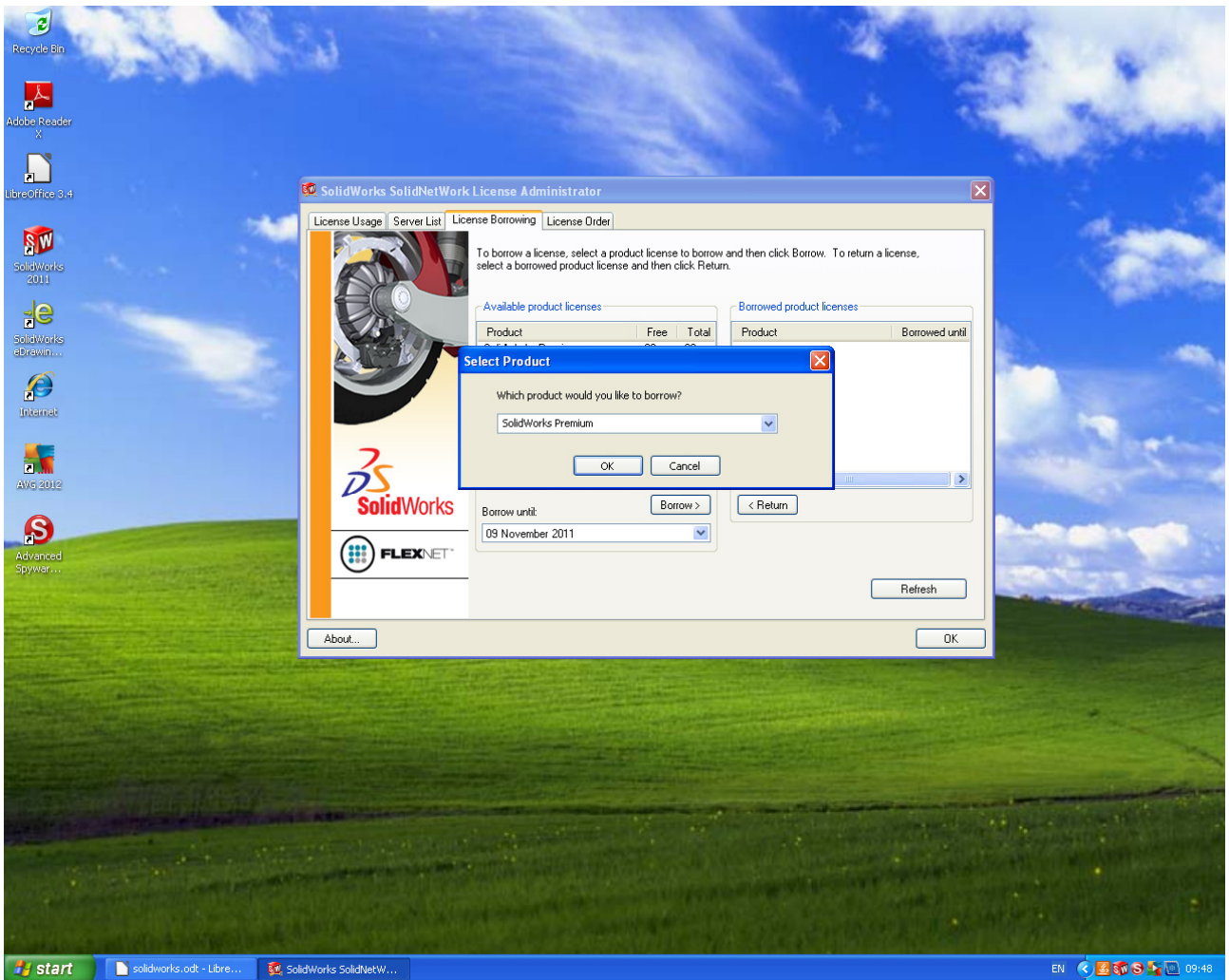
Open the program named 'Solidworks License Manager'.



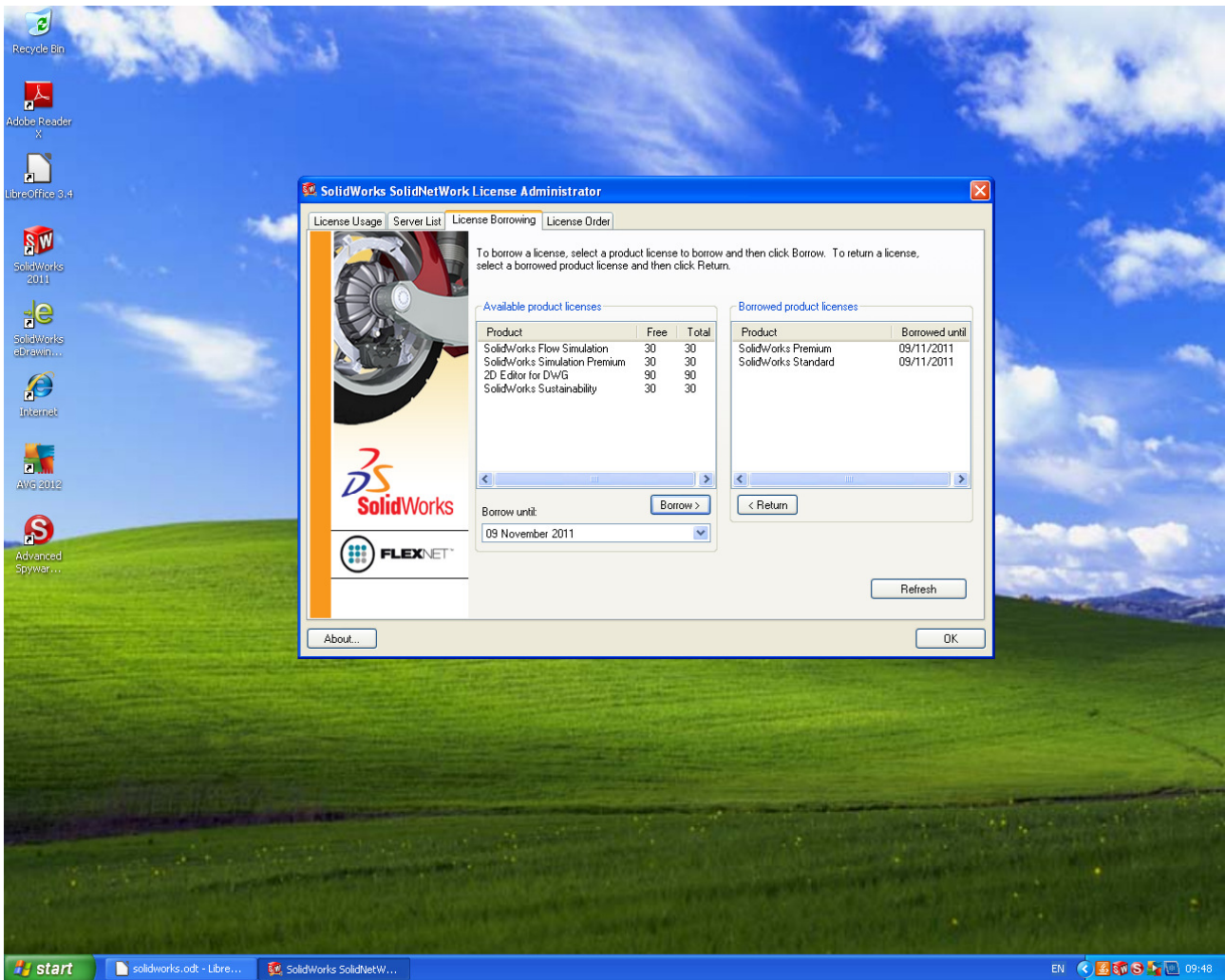
There are four tabs at the top of the page. Click on 'License Borrowing' and choose 'Solidworks Premium'



Pick a date to borrow the license until. (A license cannot be borrowed for more than one month)



Make sure it says Solidworks Premium in the box, then click ok.



You will now be able to access Solidworks at home.